

# 2024 melanoma statistics

An estimated 200,340 cases of melanoma will be diagnosed in 2024.

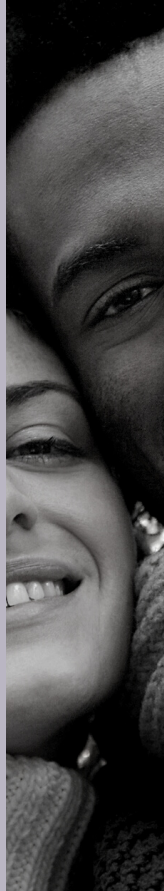
Of those, 99,700 cases will be noninvasive (in situ) and 100,640 cases will be invasive.

59,170 cases will occur in males.  
41,470 cases will occur in females.

There will be 8,290 deaths from the disease.

5,430 men are expected to die from the disease.

2,860 women are expected to die from the disease.



## AIMATMELANOMA.ORG

Between 2009 – 2019, the number of new invasive melanoma cases diagnosed in the U.S. is estimated to have increased by over 40%.

In the U.S., the percentage of people who develop melanoma has more than doubled in the past 30 years.

Ten percent of all people with melanoma have a family history of melanoma.

Incidence rates are higher in women than in men before the age of 50, but by age 65, rates in men double those in women, and by age 80 they are triple.