



# COULD IT BE **SKIN** CANCER?

Question the Marks on Your Skin.

## **KNOWLEDGE IS YOUR BEST DEFENSE.**

- Learn about Skin Cancer and its Causes.
- Find Useful Skin Cancer Facts and Information.
- Understand the Causes and Risk Factors.
- See Photos, Warning Signs, Causes and Risk Factors, and Treatment Options.

---

## **FOR MORE INFORMATION VISIT:**

The Skin Cancer Education & Research Foundation  
**[skincancerinfo.org](http://skincancerinfo.org)**

**SKIN**  
CANCER

EDUCATION &  
RESEARCH  
FOUNDATION

**AiM**  
AT MELANOMA  
FOUNDATION

# HERE'S HOW TO LOWER YOUR RISK:



Always cover up and wear sunscreen of an SPF of 30 or above.



Regularly examine your skin from head to toe for new spots, changes in moles or irregularities.



See something new, changing, or irregular? It could be skin cancer. See your health care provider or dermatologist.

## HERE'S WHAT SKIN CANCER LOOKS LIKE:

### **BASAL CELL CARCINOMA**

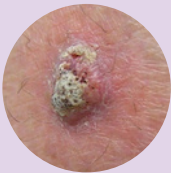
Most Common Type of Skin Cancer



These growths form in the outermost layer of the skin. This type of skin cancer generally never spreads to other parts of the skin.

### **SQUAMOUS CELL CARCINOMA**

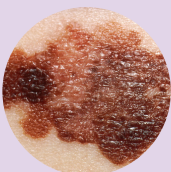
Second Most Common Type of Skin Cancer



Can appear on any part of the body, but typically forms on areas exposed to the sun. If it remains untreated, it can become deadly.

### **MELANOMA**

The Deadliest Form of Skin Cancer



Melanoma is the most serious type of skin cancer. Often the first sign of melanoma is a change in the size, shape, color, or feel of a mole.

**Early detection saves lives. Skin exams, both at home and with a dermatologist, are especially vital to spot skin cancer early when it's easiest to treat.**